

# Higher Education Evening

- Current U6 Students and their experience – Alicia, Lucy, Pravir, and Ross
- Overview of post 18 Options and the support process - Mr Russell
- Academic Support and key assessments  
- Mr Snelson
- University of Leicester, Elliot Newstead
- Any questions

# The Buzz quiz

Relevant to **16-18 Choices**



Find out what you're like and  
what you could do

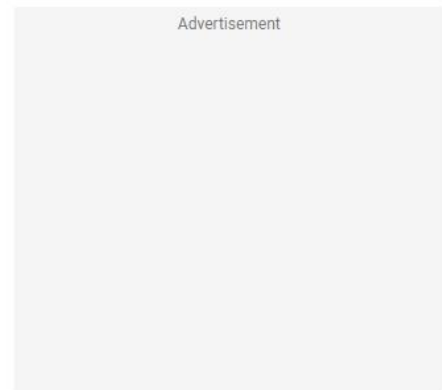
Take the Buzz Quiz



Find out what you're like  
and what you could do

## You may also like to read

- [Find career ideas](#)
- [Post-16 apprenticeships](#)
- [Traineeships](#)



# The Sixth Form



# What are the options?

- UCAS application for University
- Gap year and post results application
- Apprenticeship
- Employment

# UCAS process

- From Friday May 4<sup>th</sup> during Enrichment students will research courses and draft their personal statements.
- We advise all L6 attend open days to select courses and universities. (leave of absence given for up to 3 Open Days during school time)
- Mr Chamberlain is available for support during lunchtimes and afternoons Tuesday to Friday.

- L6 exams Monday June 3<sup>rd</sup> to Friday June 7<sup>th</sup>. Study leave will be given and students are only expected to attend for their exams.
- L6 UCAS predicted grades and subject references issued by the end of term.
- L6 finish the school year on Friday 12<sup>th</sup> July with a work experience or reading week from Monday 15<sup>th</sup> – Friday 19<sup>th</sup> July

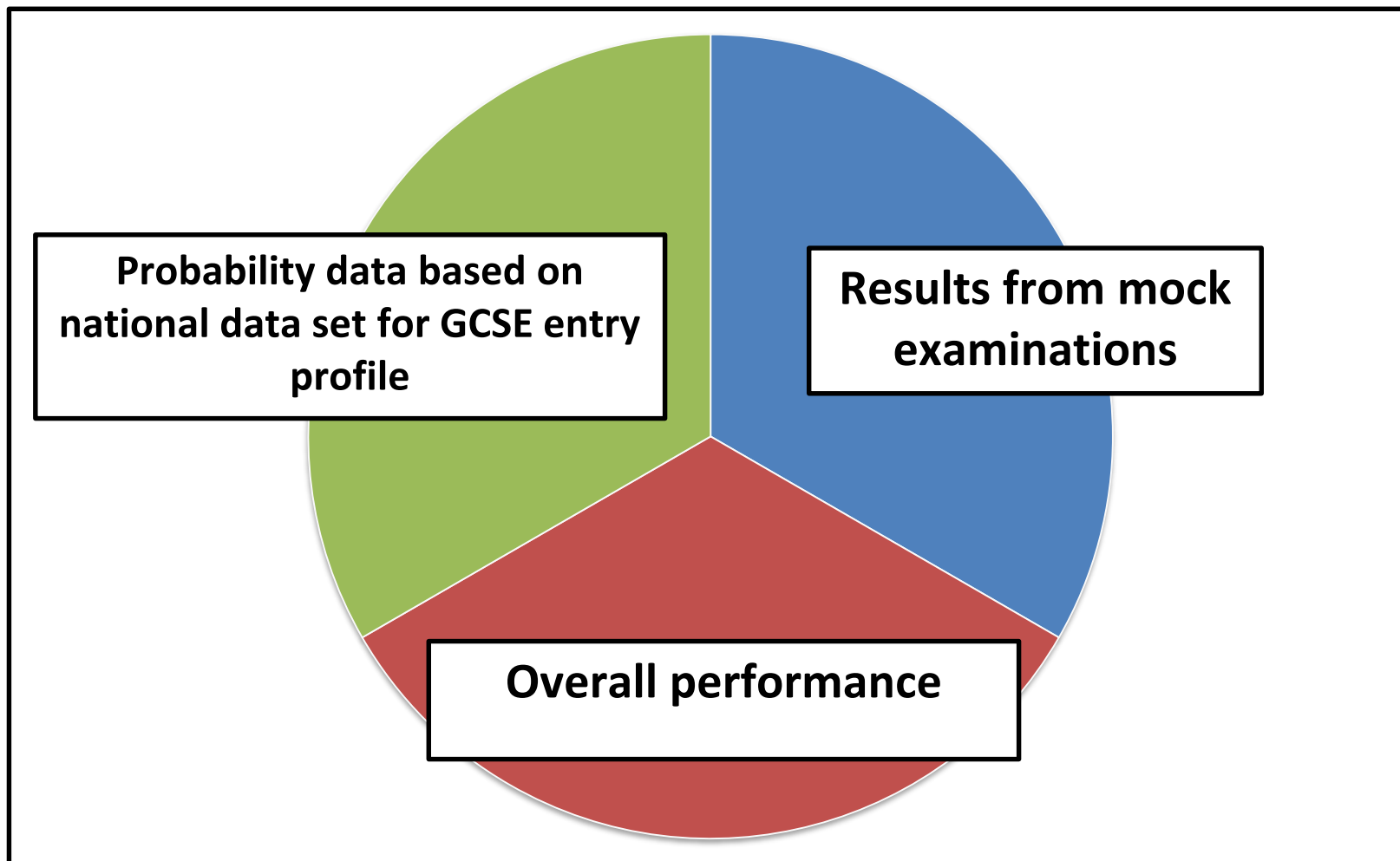
- L6 to complete a draft personal statement by Friday 5<sup>th</sup> July
- Oxbridge, medics and vets paid and send by Monday 30<sup>th</sup> September
- All remaining students paid and sent by Monday 4<sup>th</sup> November.
- Please allow a 2 week turn around for checking and references before sending to UCAS.

# UCAS Process

- Student completes personal statement and pays and sends.
- Form Tutor checks over application and completes predicted grades and school reference.
- Student makes appointment with EJT/RMS/RER for final check and to send application to UCAS.
- Support with interviews and selection process as required.



# How UCAS predicted grades will be made up



# Probability data

- Oxford Analytics have produced a tool for refining targets set for students by looking at the % likelihood of each students GCSE entry profile for achieving each A-level grade.
- This is also bespoke for each subject to take into account ranging subject difficulties and skill sets.

# A psychology example

The GCSE average point score of each student gives us the entry profile, in this example it is 6.5 – 8

This determines that on average, against last years national A Level data set, a student with these GCSE results has an:

- 11% chance of achieving an A\* in psychology
- 26% chance of achieving an A in psychology...

Oxford Analytics.org

[Main site](#)

[Report Menu](#)

[Support](#)

[Logout](#)


**A**  
2016 national results

**Psychology**


(Click here to change subject)

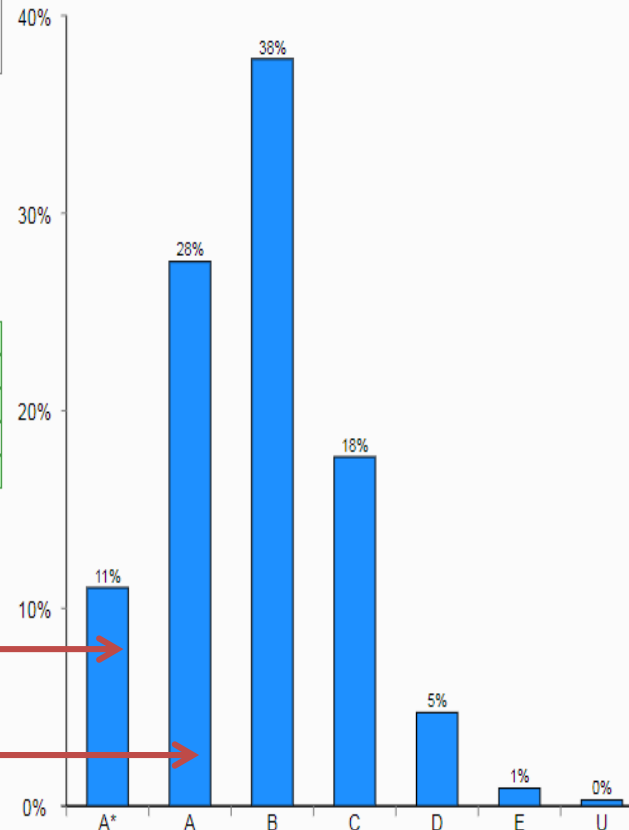
Select Prior Attainment Band

31-37 (2.5-3.5)
37-43 (3.5-5)
43-49 (5-6.5)
49-55 (6.5-8)
55-61 (8-9)

 Current chart

 All bands

 Return to Qualifications Page



# The goal

- The goal behind setting UCAS targets in this way is to put the student at the centre of the process.
- Their target will not be constrained by their performance in a single mock exam. It will also not be set arbitrarily against national data.
- This process should allow students to apply for more realistic universities and courses, alleviating the pressure of retaking mock exams to try and improve their teacher set predictions.

**Schools are being rated on the accuracy of their UCAS predictions by universities, so it is vital that we get student grades accurate, and not just give students the grade they want.**

Questions?

# Gap Year Students

- Any students on a Gap Year will get the same level of support directly from Mr Russell. This can be done electronically or in person.

# KEFW Course Popularity 2018

Medicine	21
Engineering	19
Economics	16
History	10
Law	7
Maths	7
Philosophy	6
Politics	6
Physics	5

# KEFW University Popularity 2018

University of Nottingham	17
University of Birmingham	11
University of Manchester	11
University of Liverpool	10
University of Sheffield	8
University of Leicester	7
Aston University	6
Cardiff University	6
Durham University	6
LSE	5
Oxford University	4
Queen Mary University of London	4
University of Bristol	4
University of Cambridge	4